



Holyhead **M**arine

15m Multi-Purpose Vessel

The MPV 15 design is a development of the highly successful 21.5 metre Multi-purpose Vessel, Llandwyn Island, designed and built in 1994, which is presently in service with Holyhead Towing Company.

Much of the design and construction reflects Holyhead Towing Company's operational experience, with very heavy scantlings, the best quality machinery, a high specification durable paint system and a practical working layout. Design improvements include changes to the hull form to improve manoeuvrability and handling when coming along side harbour walls and other vessels.



The MPV 15 has been designed to carry out a variety of roles such as towing, buoy handling, plough dredging, laying moorings, civil engineering support work, etc.

The vessel pictured and described in the following specification details the MPV 15 configured for the Isle of Man Government to work at Douglas Harbour and around the coast of the Isle of Man.



15m Multi-Purpose Vessel

Principal Dimensions

| | |
|--------------|------|
| Length OA | 15m |
| Length WL | 6.0m |
| Beam Moulded | 2.8m |
| Draught | 1.5m |

Propulsion

| | |
|----------------|--|
| Main Engines: | Twin Cummins CTAB.3M1 turbo-charged & intercooled 300 BHP @ 2500 RPM Keel cooled |
| Transmission: | Twin Disc MG5091 Gearboxes |
| Maximum Speed: | 9 knots |
| Bollard Pull: | 6 tonnes |
| Propellers: | Four Bladed Fixed Pitch |

Deck Equipment

| | |
|-----------------|--|
| Winch: | 3 tonne "North Sea Winches" |
| Crane: | 14 tonne metre hydraulic crane |
| Towing Hook: | 6 tonne Britannia Marine Towing Equipment Ltd, Quick Release Towing Hook |
| Deck Equipment: | Large Bow Roller Bow Pushers Hardwood Deck Covering Dutch Style Towing Bitts 'A' Frame |

Tankage

| | |
|----------------|---------------|
| Fuel Capacity: | 9840 litres |
| Fresh Water: | 220 litres |
| Grey Water: | 2 fore, 1 aft |

Navigational Equipment

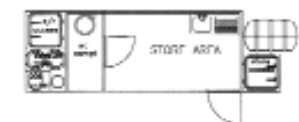
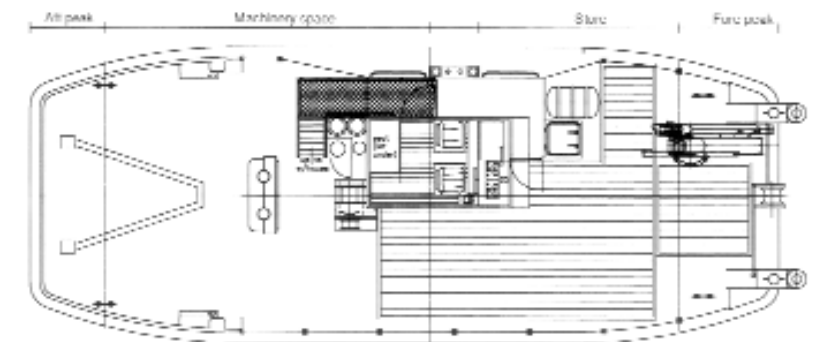
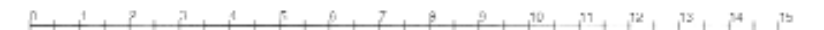
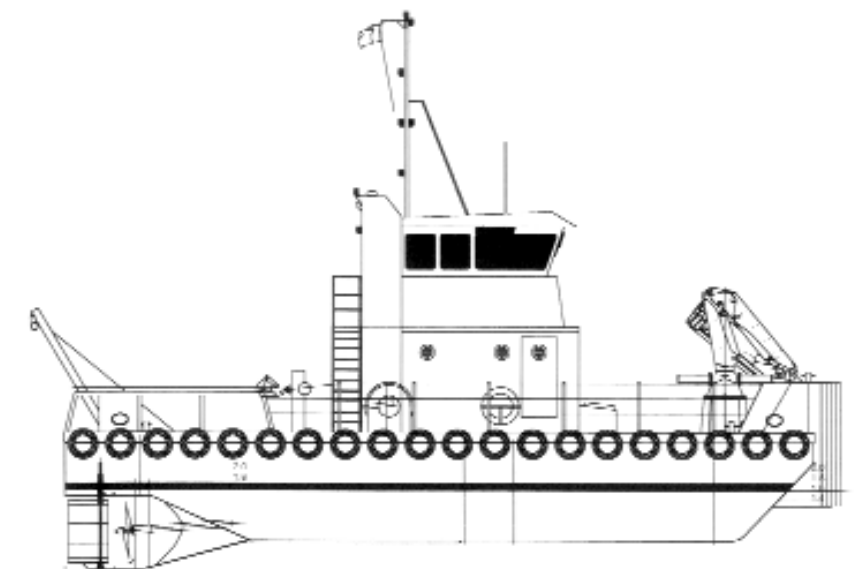
| |
|------------------|
| Koden GPS |
| Sailor VHF |
| VDO Echo-Sounder |
| DSC Compass |
| EPIRB |

Services

| | |
|---------------|--|
| Wheelhouse: | Seating for two crew and a bench seat, chart table, locker space |
| Compartments: | Deck Store, with sink, boiler and toilet. Hold store, large general equipment store |

Services

| |
|---|
| 24VDC |
| Pressurised Hot & Cold FW System |
| CO ₂ Engine Room Fire Extinguishing System |



Holyhead **M**arine **S**ervices **L**imited

Newry Beach, Holyhead, Anglesey, LL65 1YB, Wales, UK
Tel: +44(0)1407 760111 Fax: +44(0)1407 764531
e-mail: marine.services@holyhead.co.uk
website: www.holyhead.co.uk
Registered in Wales 895484

